



India Meteorological Department
(Ministry of Earth Sciences)

BULLETIN NO. 16 (BOB/07/2022)

TIME OF ISSUE: 2000 HOURS IST

DATED: 24.10.2022

FROM: INDIA METEOROLOGICAL DEPARTMENT (FAX NO. 24643965/24699216/24623220)

TO: CONTROL ROOM, NDM, MINISTRY OF HOME AFFAIRS (FAX.NO. 23093750)
CONTROL ROOM NDMA (FAX.NO. 26701729)
CABINET SECRETARIAT (FAX.NO.23012284, 23018638)
PS TO HON'BLE MINISTER FOR S & T AND EARTH SCIENCES (FAX NO.23316745)
SECRETARY, MOES (FAX NO. 24629777)
H.Q. (INTEGRATED DEFENCE STAFF AND CDS) (FAX NO. 23005137/23005147)
DIRECTOR GENERAL, DOORDARSHAN (23385843)
DIRECTOR GENERAL, AIR (23421105, 23421219)
PIB MOES (FAX NO. 23389042)
UNI (FAX NO. 23355841)
D.G. NATIONAL DISASTER RESPONSE FORCE (NDRF) (FAX NO. 26105912, 2436 3260)
DIRECTOR, PUNCTUALITY, INDIAN RAILWAYS (FAX NO. 23388503)
CHIEF SECRETARY, GOVT. WEST BENGAL (FAX NO. 033-22144328)
CHIEF SECRETARY, GOVT. OF ODISHA (FAX NO. 0674 -2536660)
CHIEF SECRETARY, GOVT. OF ASSAM (FAX NO. 0361-2237200)
CHIEF SECRETARY, GOVT. OF MEGHALAYA (FAX NO. 0364-2225978)
CHIEF SECRETARY, GOVT. OF NAGALAND (FAX NO. 0370-2270057)
CHIEF SECRETARY, GOVT. OF MIZORAM (FAX NO. 0389 2322745)
CHIEF SECRETARY, GOVT. OF MANIPUR (FAX NO. NA)
CHIEF SECRETARY, GOVT. OF TRIPURA (FAX NO. 0381-2414013/ 2351122)
CHIEF SECRETARY, GOVT. OF ARUNACHAL PRADESH (FAX NO. 0360-2212466, 2215719)
CHIEF SECRETARY, GOVT. OF ANDHRA PRADESH (FAX NO. 0863-2441029, 08645-246600)

Subject: Cyclonic Storm "SITRANG" (pronounced as "Si-Trang") over North Bay of Bengal (Cyclone Warning for West Bengal coast: Orange Message)

The cyclonic storm "SITRANG" pronounced as "Si-Trang" over northwest and adjoining central Bay of Bengal moved north-northeastwards with a speed of 28 kmph during past 06 hours & lay centered at 1730 hours IST of today, the 24th October over north Bay of Bengal near latitude 20.7^oN and longitude 90.1^oE, about 230 km east-southeast of Sagar Island and 230 km south of Barisal (Bangladesh).

It is very likely to continue to move north-northeastwards and it is likely to cross Bangladesh coast between Tinkona Island and Sandwip close to Barisal during midnight of today and early hours of tomorrow, the 25th October, 2022.

Forecast track and intensity are given below:

Date/Time(IST)	Position (Lat. ^o N/ long. ^o E)	Maximum sustained surface wind speed (Kmph)	Category of cyclonic disturbance
24.10.22/1730	20.7/90.1	80-90 gusting to 100	Cyclonic Storm
24.10.22/2330	22.0/90.5	80-90 gusting to 100	Cyclonic Storm
25.10.22/0530	23.3/91.0	50-60 gusting to 70	Deep Depression
25.10.22/1130	24.6/91.6	45-55 gusting to 65	Depression
25.10.22/1730	25.9/92.5	25-35 gusting to 45	Low Pressure Area

Warnings:

(i) Rainfall (warning graphics enclosed)

West Bengal: Light to moderate rainfall at most places with isolated **heavy rainfall** is likely over coastal districts of West Bengal (South & North Parganas) during next 06 hours and decrease in intensity thereafter.

Northeastern States:

Light to moderate rainfall at most places with **heavy to very heavy rainfall** at isolated places is likely over North Assam, Arunachal Pradesh, Nagaland & Manipur; **heavy to Extremely heavy rainfall** likely over South Assam, Meghalaya, Mizoram, & Tripura on 24th October.

Light to moderate rainfall at most places with isolated **heavy to very heavy rainfall** is likely over Arunachal Pradesh, Assam, Meghalaya, Mizoram, & Tripura on 25th and isolated **heavy rainfall** is likely over Arunachal Pradesh, northeast Assam and Nagaland on 26th October.

(ii) Wind warning:

Gale wind speed reaching 80-90 kmph gusting to 100 kmph prevailing over north Bay of Bengal and along and off Bangladesh coast. It would continue over the same region during next 6 hours and gradually decrease thereafter becoming 40-50 kmph gusting to 60 kmph by forenoon of 25th October.

Squally wind speed reaching 50-60 kmph gusting to 70 kmph is prevailing along & off West Bengal coast and 40-50 kmph gusting to 50 kmph along & off north Odisha coast. It would continue over the same region during next 6 hours and gradually decrease thereafter becoming 30-40 kmph gusting to 50 kmph by forenoon of 25th October.

Squally wind speed reaching 40-50 kmph gusting to 60 kmph is likely over Mizoram & Tripura from tonight. It would increase gradually becoming wind speed reaching 50-60 kmph gusting to 70 kmph over Tripura and 45-55 kmph gusting to 65 kmph is likely over Mizoram, south Assam and adjoining east Meghalaya & Manipur during early hours to afternoon of 25th October and decrease thereafter gradually.

(iii) Sea condition

High Sea conditions are prevailing over North Bay of Bengal and along and off Bangladesh coast. It would continue during next 06 hours over the same region and improve gradually thereafter becoming rough to very rough for subsequent 12 hours. **Rough to very rough** Sea conditions likely to prevailing along & off Odisha-West Bengal coasts during next 12 hours and improve gradually thereafter.

(iv) Storm Surge Warning (warning graphics enclosed)

(i) Tidal wave of about 2.0 m height above astronomical tide is likely to inundate low lying areas of Bangladesh coast during next 06 hours and gradually decrease thereafter.

(ii) Tidal wave of about 0.5 to 1.0 m height above astronomical tide is likely to inundate low lying areas of West Bengal (North & South 24 Parganas) and gradually decrease thereafter.

(v) Fishermen Warning (warning graphics enclosed)

Fishermen are advised not to venture into central Bay of Bengal on 24th, north & adjoining central Bay of Bengal on 24th and 25th October, 2022.

Fishermen are advised not to venture into Sea along and off Odisha, West Bengal & Bangladesh coasts during 24th to 25th October.

(vi) Damage expected over coastal districts of West Bengal (South and North 24 Parganas including Sundarbans)

- Damage to thatched huts.
- Damage to power and communication lines due to breaking of branches.
- Major damage to Kutcha and minor damage to Pucca roads.
- Damage to paddy crops, banana, papaya trees and orchards.
- Sea water inundation in low lying areas after erosion of Kutcha embankments
- Adverse impact on flora & fauna and animal lives of Sundarbans.

(vii) Damage expected over Tripura, Mizoram, Meghalaya, Manipur and South Assam

- Damage to standing crops including agricultural and horticultural crops due to heavy rain and squally winds
- Breaking of tree branches and uprooting of small trees like drumsticks, banana and papaya trees
- Inundation/localized flooding in low lying areas due to heavy rains
- Localized landslides/ mudslides/ mud slips/ mud sink possibility due to heavy rain
- Traffic may be disrupted due to poor visibility in association with heavy rain
- Vulnerable structures like hoardings, tents and display boards may be damaged

(viii) Action suggested for West Bengal

- Total suspension of fishing operations till 25th forenoon.
- People to remain in safe places during next 06 hours.

(ix) Action suggested for Tripura, Mizoram, Meghalaya, Manipur and South Assam

- People are advised to be cautious while going outside
- Regulate traffic
- People should not move nearby to vulnerable structures

(x) Advisory for On-shore and Off-shore Installations

Regulation/Suspension of off-shore activities over central and North Bay of Bengal and along & off Odisha and West Bengal coasts till 25th October morning.

The system is under continuous surveillance and the next message will be issued at 2330 hours IST of today, the 24th October, 2022.

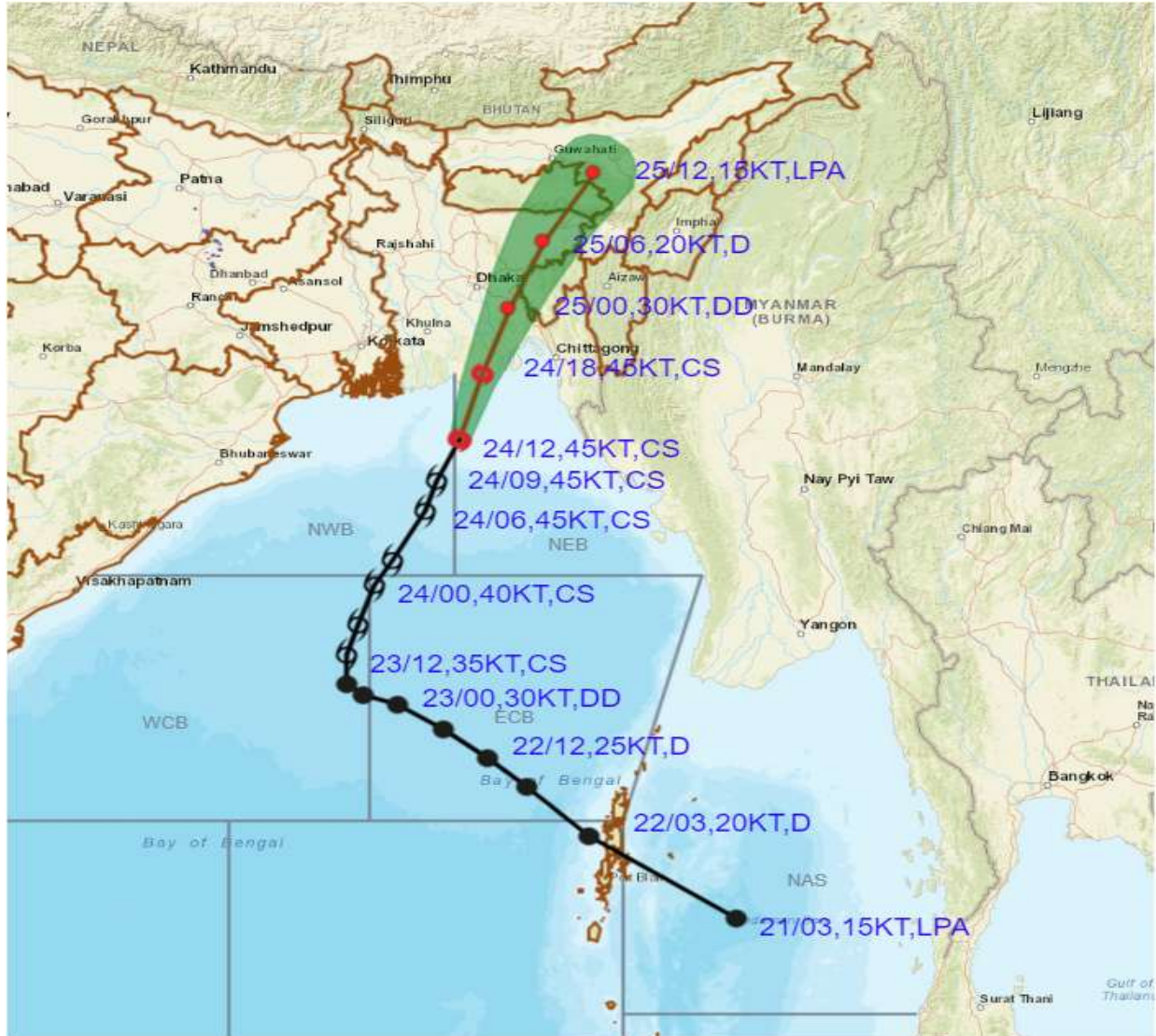
(AK Das)
Scientist- E, Cyclone Warning Division, New Delhi

Copy to: ACWC Kolkata/ ACWC Chennai/ CWC Bhubaneswar/CWCVisakhapatnam/MO Port Blair

LEGEND: Heavy Rainfall: 64.5 to 115.5mm, **Very Heavy Rainfall:** 115.6 to 204.4mm **Most Places:** more than 76% of total stations, **Isolated Places:** Less than 25% of total



OBSERVED AND FORECAST TRACK ALONGWITH CONE OF UNCERTAINTY OF CYCLONIC STORM SITRANG OVER NORTH BAY OF BENGAL BASED ON 1200 UTC OF 24th OCTOBER, 2022



DATE/TIME IN UTC

IST=UTC + 0530

L: LOW PRESSURE AREA

WML: WELL MARKED LOW PRESSURE AREA

D: DEPRESSION (17-27 KT)

DD: DEEP DEPRESSION (28-33 KT)

CS: CYCLONIC STORM (34-47 KT)

SCS: SEVERE CYCLONIC STORM (48-63KT)

VSCS: VERY SEVERE CYCLONIC STORM (64-89 KT)

ESCS: EXTREMELY SEVERE CYCLONIC STORM (90-119 KT)

SuCS: SUPER CYCLONIC STORM (\geq 120 KT)


 **LESS THAN 34 KT**

 **34-47 KT**

 **\geq 48 KT**

 **OBSERVED TRACK**

 **FORECAST TRACK**

 **CONE OF UNCERTAINTY**



OBSERVED AND FORECAST TRACK ALONGWITH QUADRANT WIND DISTRIBUTION OF CYCLONIC STORM SITRANG OVER NORTH BAY OF BENGAL BASED ON 1200 UTC OF 24th OCTOBER, 2022



DATE/TIME IN UTC
 IST=UTC + 0530
 L: LOW PRESSURE AREA
 WML: WELL MARKED LOW PRESSURE AREA
 D: DEPRESSION (17-27 KT)
 DD: DEEP DEPRESSION (28-33 KT)
 CS: CYCLONIC STORM (34-47 KT)
 SCS: SEVERE CYCLONIC STORM (48-63KT)
 VSCS: VERY SEVERE CYCLONIC STORM (64-89 KT)
 ESCS: EXTREMELY SEVERE CYCLONIC STORM (90-119 KT)
 SuCS: SUPER CYCLONIC STORM (≥20 KT)

● LESS THAN 34 KT
 ○ 34-47 KT
 ⊙ ≥ 48 KT
 — OBSERVED TRACK
 — FORECAST TRACK
 ▲ CONE OF UNCERTAINTY
 AREA OF MAXIMUM SUSTAINED WIND SPEED:
 ■ 28-33 KT (52-61 KMPH)
 ■ 34-49 KT (62-91 KMPH)
 ■ 50-63 KT (92-117 KMPH)
 ■ ≥ 64 KT (≥118 KMPH)

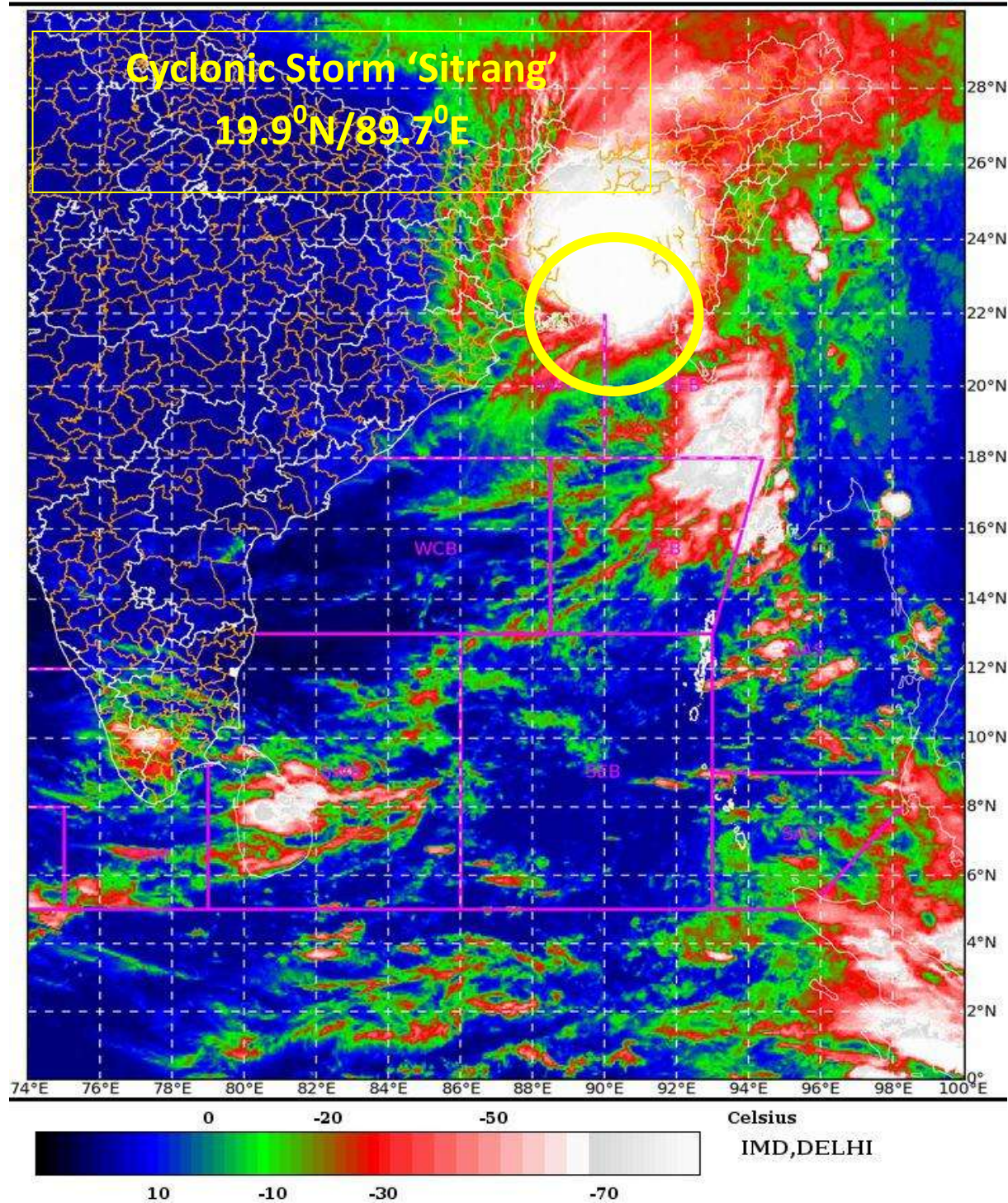
IMPACT OVER THE SEA

MSW (knot/kmph)	Impact	Action
28-33 (52-61)	Very rough seas	Total suspension of fishing operations
34-49 (62-91)	High to very high seas	Total suspension of fishing operations
50-63 (92-117)	Very high seas	Total suspension of fishing operations
≥ 64 (≥118)	Phenomenal	Total suspension of fishing operations

SAT : INSAT-3D IMG 24-10-2022/(1300 to 1326) GMT

IMG_TIR1_TEMP 10.8 um 24-10-2022/(1830 to 1856) IST

L1C Mercator





WARNING

WARNING (TAKE ACTION)
ALERT (BE PREPARED)
WATCH (BE UPDATED)
NO WARNING (NO ACTION)



Heavy Rain	Heavy Snow	Thunderstorm	Dust Storm
Strong Winds	Visibility	Cyclone	Squall/ Hail
Frost	Cold Wave	Heat Wave	Sea State

Fishermen warning graphics

Day 1: 24.10.2022/11:30AM to 25.10.2022/05:30AM



Day 2: 25.10.2022/05:30AM to 26.10.2022/05:30AM



Day 3: 26.10.2022/05:30AM to 27.10.2022/05:30AM



Day 4: 27.10.2022/05:30AM to 28.10.2022/05:30AM

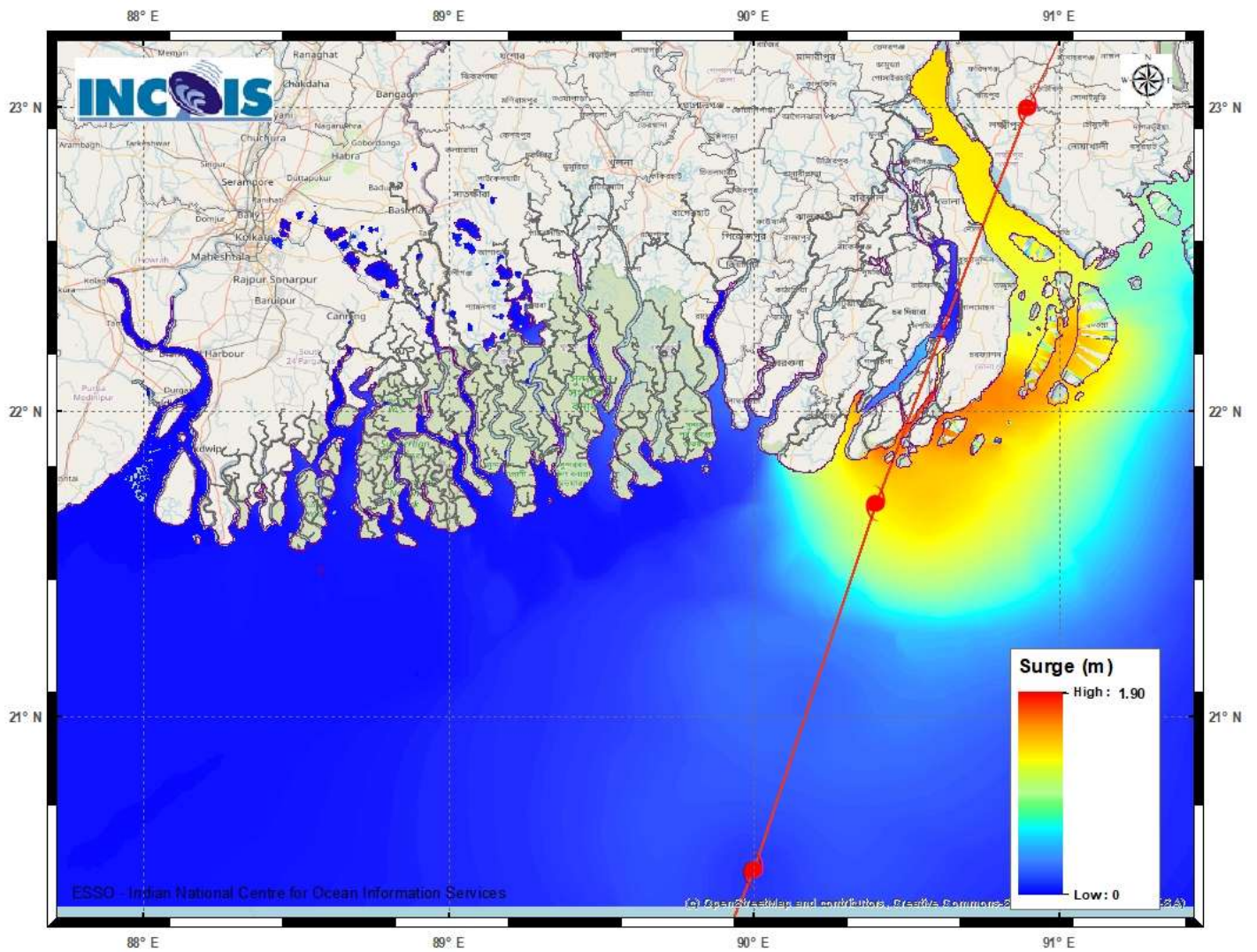


Day 5: 28.10.2022/05:30AM to 29.10.2022/05:30AM



	Squally WX with wind speed 40-45 kmph gusting to 55 kmph
	Squally WX with wind speed 45-55 kmph gusting to 65 kmph
	Squally wind speed with wind speed 45-55 kmph gusting to 65 kmph
	Squally wind speed with wind speed 55-65 kmph gusting to 75 kmph
	Gale wind speed with wind speed 65-75 kmph gusting to 85 kmph
	Gale wind speed with wind speed 80-90 kmph gusting to 100 kmph
	Gale wind speed with wind speed 90-100 kmph gusting to 110 kmph

Fishermen are advised not to venture into the marked areas.



Storm Surge Warning Graphics